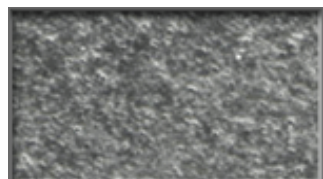


GE Compax Kerne mit Außenmaßangabe

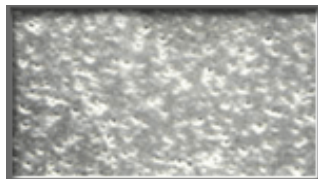
Section	Standard	Ohne HM Ring		Mit HM Ring				
	(D×T)	SubMicrom	5§-	SubMicrom	3§-	5§-	25§-	50§-
D-6	3.1×1.0	5010SM	5010					
D-12	3.1×1.5	5015SM	5015					
	1.5×1.5			5115SM	5815		5235	
D-15	5.2×2.5	5025SM	5025					
	4.0×2.3			5123SM	5823		5223	
	3.5×2.3							5840
D-18	5.2×3.5	5035SM	5035					
	4.0×2.9			5129SM	5829		5229	
	3.5×2.9							5435
D-21	7.0×4.0					5840	5240	
	6.4×3.8							5530
D-24	7.0×5.3					5853	5253	
	6.4×5.3							5535
D-27	13.0×8.7						5208	5730
D-30	18.6×11.6						5211	5735
	18.6×13.5							5913
D-33	18.6×15.5							5915
	18.6×17.5							5917
D-36	18.6×18.5							5918

Produkte der General Electric Company in USA.

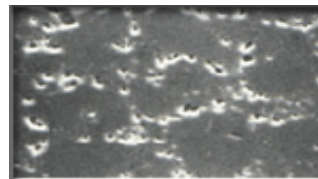
Granulometrien



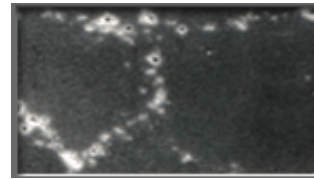
3 my



5 my



25 my



50 my