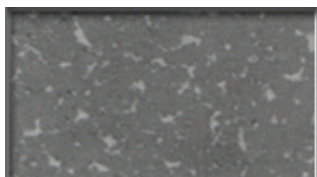


SUMITOMO Kerne mit Außenmaßangebe

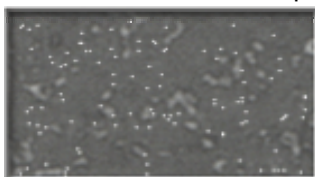
ADDMA No	Product No		Standard	Korn Größe					
	Neuer Typ Tip(A)	Alter Typ Tip(B)		1 ϕ -	3 ϕ -	5 ϕ -	6 ϕ -	12 ϕ -	25 ϕ -
D 6	WD 705	WD 105	2.5×1.0	AB	B	A			A
D12	WD 710	WD 110	3.2×1.5	AB	B	A			A
D15	WD 715	WD 115	5.2×2.5	B	B	A			A
D18	WD 720	WD 120	5.2×3.5	B	B	A			A
D 6	WD 805	WD 105 T	2.5×1.0	AB	B	A			A
D12	WD 810	WD 110 T	3.2×1.5	AB	B	A			A
D15	WD 815	WD 115 T	5.2×2.5	B	B	A			A
D18	WD 820	WD 120 T	5.2×3.5			A			
D 6		WD 205	0.9×0.9	B					
D 9		WD 207	1.2×1.2	B					
D12	WD 910	WD 210	1.5×1.5	AB	AB	A			A
D15		WD 215	2.3×2.3	B	B				
	WD 915		4.0×2.3	A	A	A			A
D18		WD 220	3.5×2.9	B	B			B	
	WD 920		4.0×2.9	A	A	A		A	A
D21		WD 225	5.0×3.8		B			B	
	WD 925		7.0×4.0		A	A		A	A
D24		WD 230	6.4×5.3		B			B	
	WD 930		7.0×5.3		A	A		B	
		WD 352	12.0×5.5					A	A
D27		WD 362	15.0×5.5					B	
	WD 940		8.7×7.5			A		A	
D27		WD 351	12.0×9.0				B	B	
		WD 361	15.0×9.0					B	
D30		WD 350	12.0×12.0				B	B	
	WD 950		13.0×12.0			A		A	A
		WD 300	15.0×12.0				B	B	

Produkte von Sumitomo Electric Industries, Ltd. in Japan.

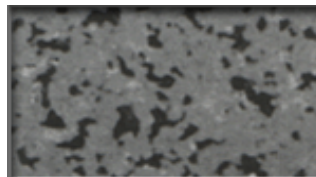
Granulometrien



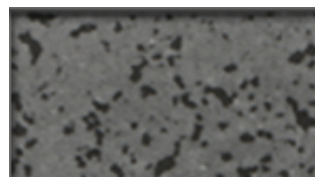
WD230N



WD930C



Wettbewerber



WD815M